

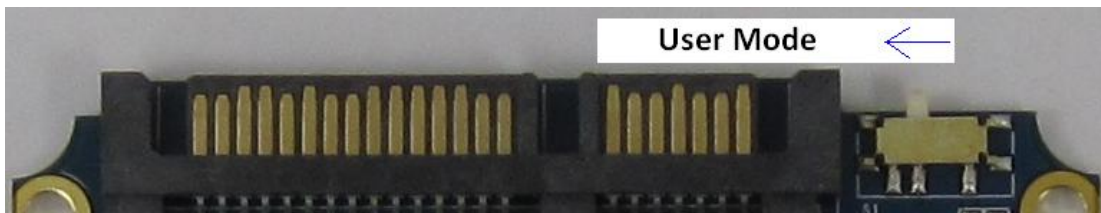
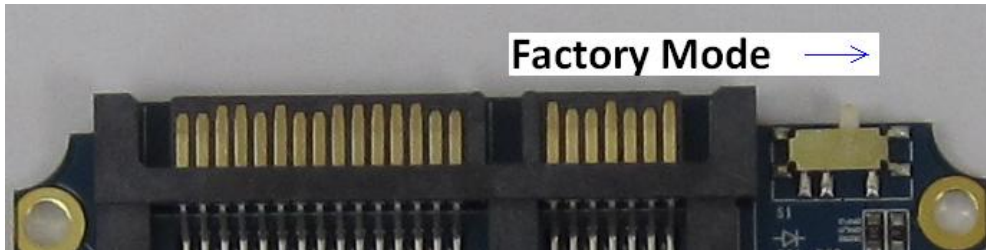
Switch Mode Selection

ULTRA Drive GX / GX2 model

May, 2011

Super Talent Technology, INC.

The following pictures show you the switch mode.

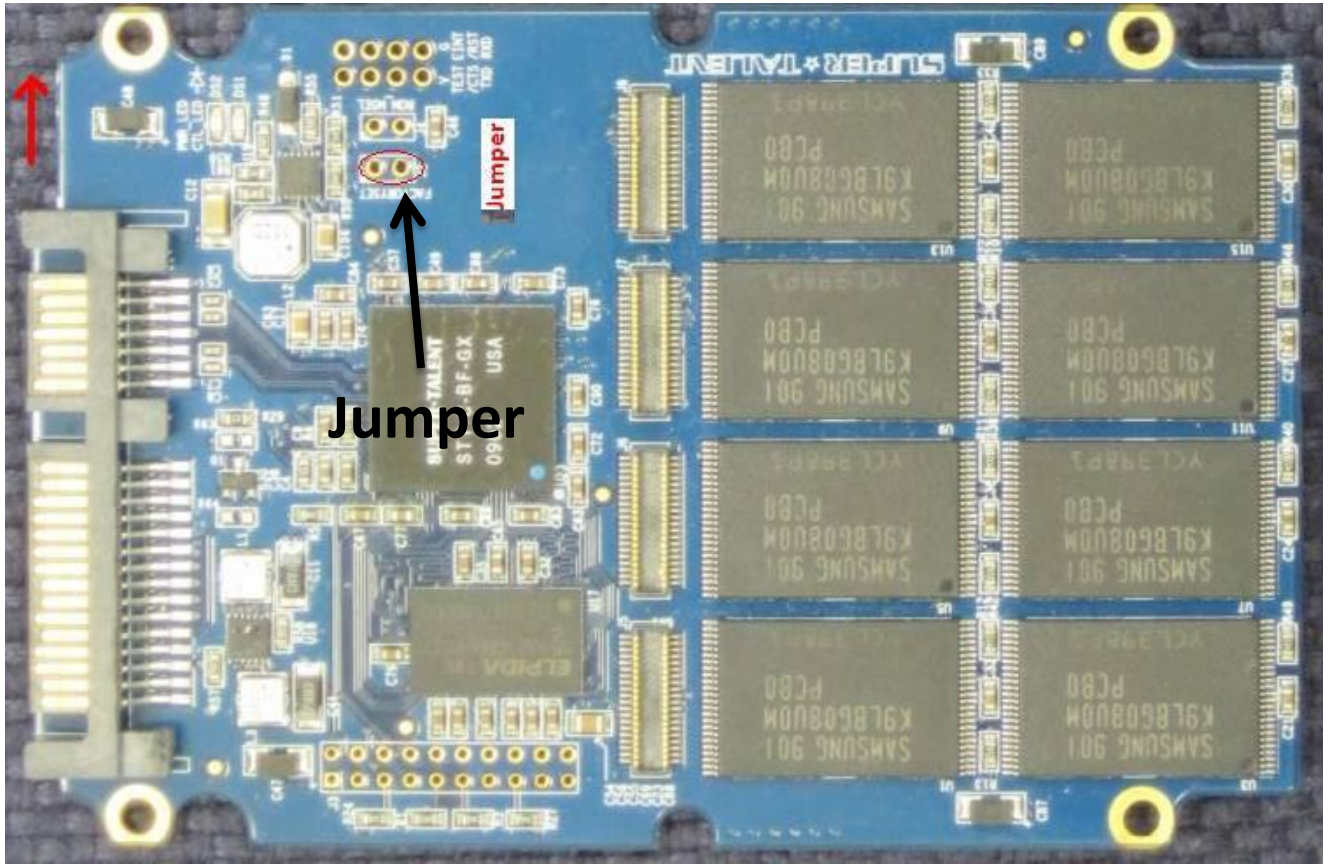


The above pictures show you the switch mode.

- Factory mode position is used only at running MP TOOL at factory. All customers do not use this mode.
- User (Normal) mode is the right position for all customers.

Some old models do not have that switch but it has the internal option.

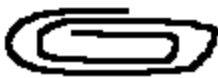
Next page will show the switch (actually it is Jumper) location and how to use that.



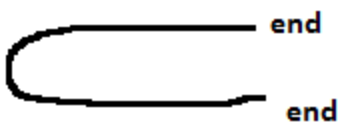
Using a 'Jumper', please short it to run the MP TOOL.

If you do not have a Jumper, you can use a paper clip and use it as a 'Jumper'
(Grind it both ends and it will be easier to put it into the jumper holes.)

If your SSD is this kind, you must get the Allowance of VOID WARRANTY label peeling off from engineer or tech support people. Please keep that allowance e-mail and attach the e-mail hard copy for any future RMA.



Extend the paper clip
and make it as below.
Grind both ends as
sharp as possible.



**When you grind the paper clip,
the above flat file is useful.**